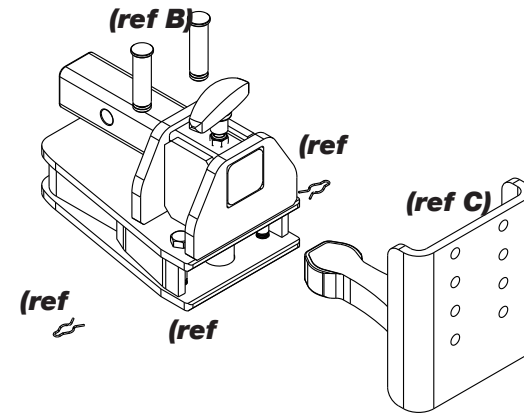




Maintenance & Storage

Periodic cleaning and lubrication with a white lithium type grease will enable you to enjoy your TeleSwivel® 300 for many years.

1. Remove the clips (ref A); the stop pins (ref B) will pull out from the top of the cassette.
2. Remove the probe (ref C) from the cassette (ref D).
3. Clean with soap and water, or a degreasing agent. You may find a pressure washer to be helpful in cleaning out the inside of the cassette. Ensure probe and inside of cassette are dry.
4. Lubricate both sides of the probe and the inside of the cassette with white lithium grease or equivalent.
5. Place the probe back in the case. Replace the stop pins (insert them from the top of the case) and secure with clips.
6. **Warning: Do not operate without stop pins securely in place.**



Service & Repair



If you need service or replacement parts, please contact us:

Web: teleswivel.com
 E-mail: info@teleswivel.com
 Phone: 888-TEL-SWIV (888-835-7948)



Troubleshooting

Your TeleSwivel® 310 hitching system should provide years of problem-free service. Occasionally, however, some incidents may occur.

PROBLEM	LIKELY CAUSE	SOLUTION
The TeleSwivel® probe is not functioning smoothly.	Dirt or other possible contamination is inside the case.	Clean the TeleSwivel® following the "Main-tenance & Stoarge" instructions.
The TeleSwivel® locking pin will not seat back into locked position.	Dirt or other possible contamination is on the locking pin or in the locking pin hole.	Clean the TeleSwivel® following the "Main-tenance & Stoarge" instructions.
The TeleSwivel® probe will not retract back into cassette.	A. The tongue weight of the trailer is too high. B. Probe is misaligned due to steep terrain or severe angle. C. Your trailer brakes may be engaging.	A. Reload the trailer with the weight mainly over the trailer axle. B. Drive vehicle to a surface that is more level and align vehicle & trailer before locking into place. C. Chock the trailer and back up to lock.
The TeleSwivel® probe is jammed.	Possible damaged or bent TeleSwivel® probe due to operating in the	Contact TeleSwivel® technical support.



Thank you for purchasing a TeleSwivel® 310 brand hitching system - the fastest, easiest, and safest way to connect a trailer to a tow vehicle!

Your TeleSwivel® 310 is designed and built to the highest standards to provide years of trouble-free towing.



TeleSwivel® 310



TeleSwivel® 310 AP

**Owner's Manual for
TeleSwivel® 310 Series**



WARNING

FAILURE TO FOLLOW
OPERATING INSTRUCTIONS
COULD RESULT IN SERIOUS
INJURY OR DEATH

**MAXIMUM GROSS TRAILER
WEIGHT: 14,000 LBS.**

**MAXIMUM TONGUE WEIGHT:
1,400 LBS.**

DO NOT EXCEED THE CAPACITY OF THIS
HITCH OR THE VEHICLE TOW RATING AS
SPECIFIED IN YOUR VEHICLE OWNER'S
MANUAL

This tow-bar complies with the requirements of
the Federal Motor Carrier Safety Administration

Manufactured by TeleSwivel, LLC.

The TeleSwivel® 310 and the TeleSwivel® 310 AP are both backed by a limited 2-year warranty. For full details about the warranty please visit teleswivel.com or email warranty@teleswivel.com.

888-TEL-SWIV (888-835-7948)



Safety Guidelines

- WARNING: Do not exceed the towing capacity of your tow vehicle. Check the vehicle owner's manual for the manufacturer's recommendations.**
WARNING: Never use a TeleSwivel
- ® hitching system without both stop pins securely inserted and clipped in place. Failure to do so could result in serious injury or death if the trailer becomes disconnected from the hitch system.**
- WARNING: Never use a TeleSwivel® hitching system without both retainer rods securely inserted and clipped in place to secure the dual ball assembly. Failure to do so could result in serious injury or death if the trailer becomes disconnected from the hitch system.**
- WARNING: Do not exceed the tongue weight limits for your trailer or hitch. Always load your trailer properly.**
- WARNING: Do not tow with a TeleSwivel® in the extended position to avoid damage to the probe.**
- Use wheel chocks to keep your trailer in place when connecting tow vehicle.
- Connect safety chains whenever you tow.
- Always make the electrical connection for trailer lights (and brakes, if your trailer is so equipped).

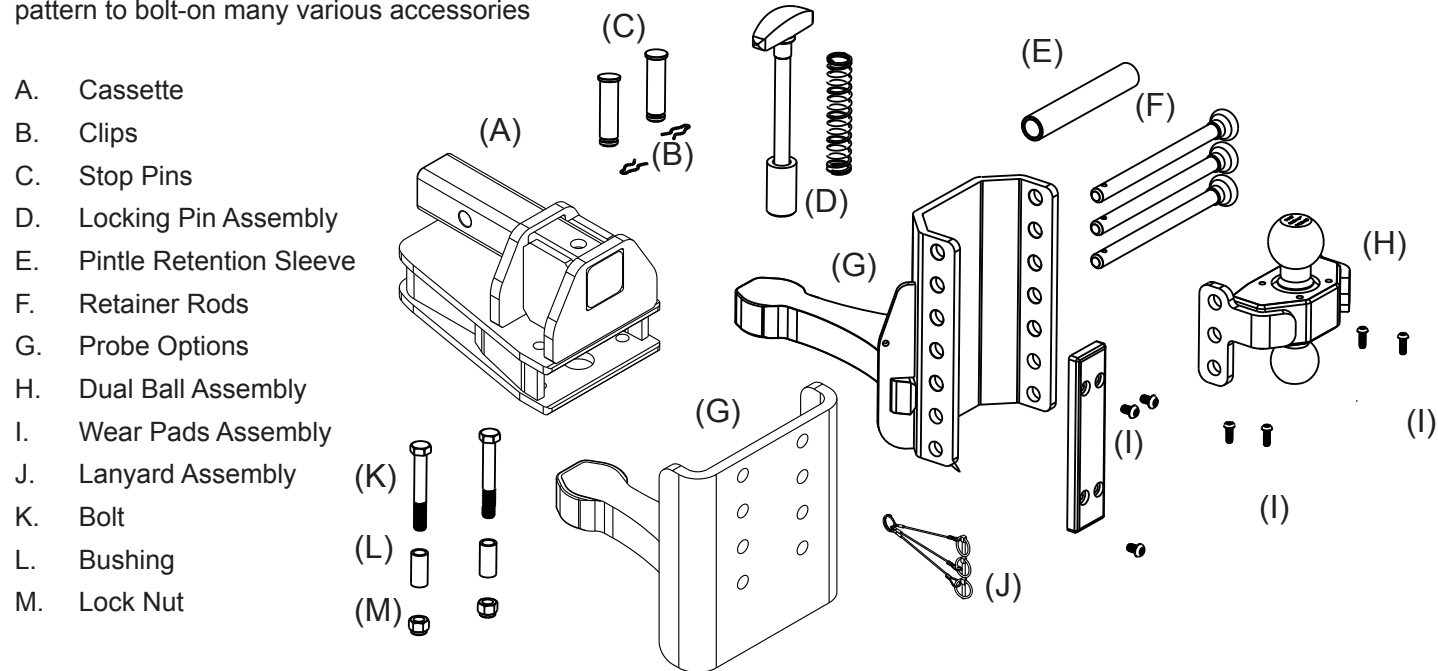


Installation & Parts

- Insert adapter arm (ref A) into your 2" receiver (ref B).
- Insert a hitch pin rated at 14,000 pounds through the receiver hole to secure your adapter (a locking hitch pin is recommended).
- For the TeleSwivel® 310, all other necessary parts are attached to the adapter cassette. For the TeleSwivel® 310 AP bolt on your desired accessory in accordance with specific weight requirements. See chart below:

Probe position	Ball Hitch rating	Pintle hitch rating
Up (Rise)	14,000 lbs GTW 1,400 lbs tongue weight	14,000 lbs GTW 1,400 lbs tongue weight
Down (Drop)	12,000 lbs GTW 1,200 lbs tongue weight	14,000 lbs GTW 1,400 lbs tongue weight

The **TeleSwivel® 310** is equipped with an adjustable height mounting plate (G1) and a reversible dual ball assembly with a 2" and a 2 5/16" ball. This assembly is held in place by two retainer rods. A third retainer rod is provided for use as a retainer for a pintle or lunette style trailer. The **TeleSwivel® 310 AP** has an accessory plate (G2) with a standard hole pattern to bolt-on many various accessories

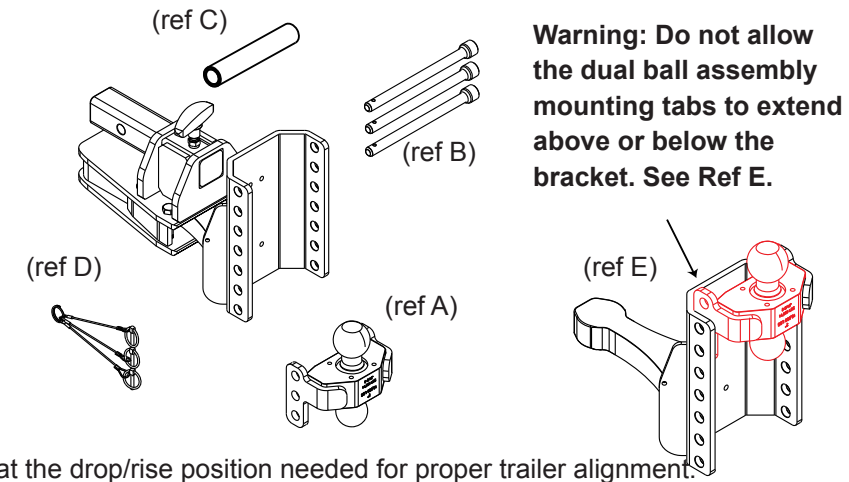


Operation

Set-up Instructions

TeleSwivel® 310

- Align the dual ball assembly (ref A) to the preferred height.
- Insert the retainer rods (ref B) through the probe bracket, the heavy duty pintle retention sleeve (if used) (ref C) and dual ball assembly.
- Secure the retainer rods with the tethered lynch pins (*Lanyard Assembly*) (ref D). **Be sure to lock the lock pins before towing.**

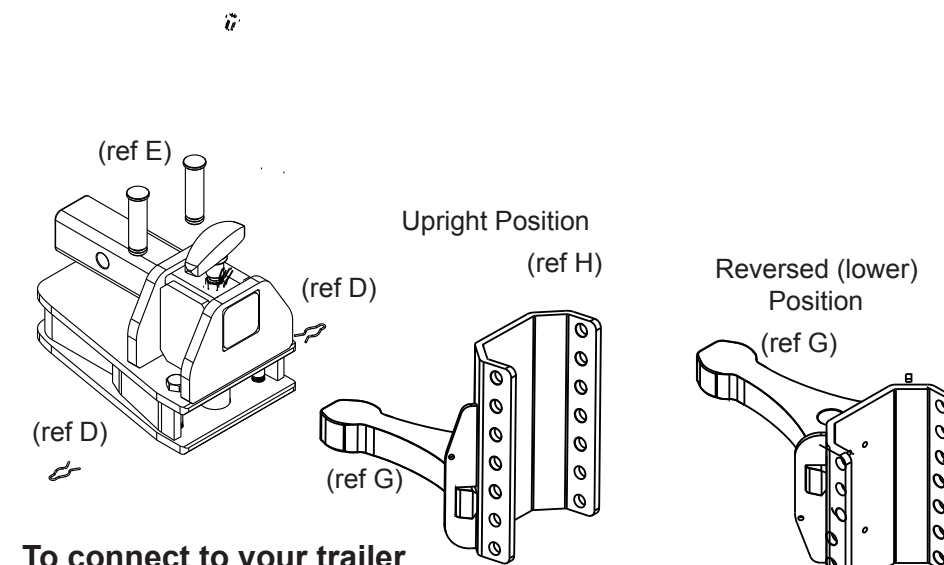


TeleSwivel® 310 AP

- Attach your preferred bolt-on accessory securely at the drop/rise position needed for proper trailer alignment.

To increase the drop on your hitch

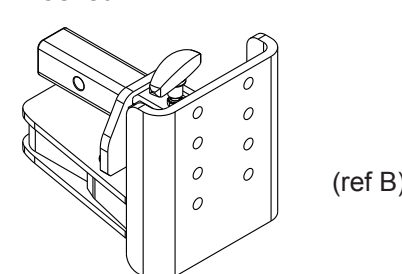
- Remove the two clips (ref D below) to release the two stop pins (ref E).
(Note: The unit may need to be pulled out of the receiver in order to remove the stop pins on some vehicles.)



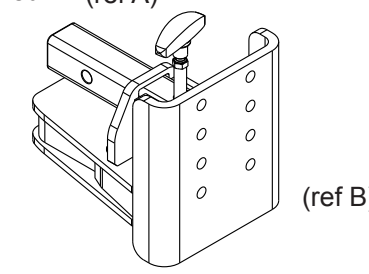
To connect to your trailer

- Back up tow vehicle to get close to the trailer.
- Lift up handle (ref A below) to unlock.
- Extend and swivel the probe assembly (ref B) to position under the trailer coupler or pintle hitch.
- Connect and lock the trailer coupler (or add third retainer rod and heavy duty pintle retention sleeve, for pintle hook retention, if used) safety chains and electrical connections.
- Lock the TeleSwivel® into place by either backing into the chocked trailer or pulling forward to align the tow vehicle and trailer, and applying your tow vehicle's brakes. If your electric or surge trailer brakes prevent the TeleSwivel® from locking into place, chock the trailer and back up the tow vehicle to lock. **Note: Ensure that the TeleSwivel® locking pin is securely in place before towing.**

Locked



Unlocked (ref A)



Unlocked & Pulled Out (ref A)

