

# The fastest, easiest, safest way to connect a trailer. **EVER!**

## The Problem with Towing

You need exact alignment to connect to trailers.  
You have limited visibility of the trailer.

*Does your old hitch technology:*

- take several minutes to align and waste fuel and time?
- cause equipment damage from near misses and collisions?
- cause injuries from muscling the trailer onto the hitch?

## Problem solved: TeleSwivel®

*Move the hitch, not the truck*

### TeleSwivel® Target Zone



- Reduce connection times
- Minimize extended idling
- Reduce equipment damage
- Reduce injuries caused by lifting trailers

## TeleSwivel® 210 Series



- Fits 2" Receiver
- Standard configuration is equivalent to a 4" drop
- Rated up to 10,000 lbs (GTW), 1,000 vertical tongue weight

The TeleSwivel® 210 offers various interchangeable probe options to suit your specific connection needs. The standard probe can be used with any standard ball mount. Alternate probe options shown below.



Drop hitch



Accessory Plate

## TeleSwivel® Receivers



### Teleswivel® 400

- Rated up to 15,000 lbs. GTW
- 1,500 lb tongue weight
- Extends out 6 inches
- Swivels 5 inches to each side

### Teleswivel® 600

- Rated up to 25,000 lbs. GTW
- 2,000 lb tongue weight
- Extends out 10 inches
- Swivels 8 inches to each side

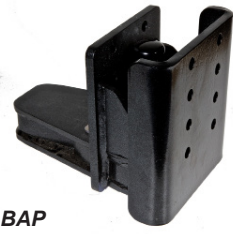
## TeleSwivel® 310AP Series

Fits any standard 2" receiver

- Plate will accommodate most bolt-on combination hitch accessories with a hole pattern of 3<sup>3</sup>/<sub>8</sub>" across and 1<sup>3</sup>/<sub>4</sub>" down
- 310 BAP and 300 BAP HD (20,000 lbs GTW) also available
- 310 BAP and 300 BAP HD bolt on to rear frame of truck
- Requires 1<sup>3</sup>/<sub>4</sub>" clearance below receiver box and 3<sup>3</sup>/<sub>4</sub>" behind hitch pin



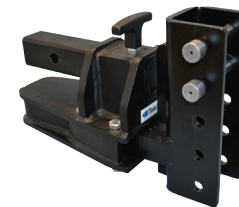
310 AP



310 BAP

## TeleSwivel® 210/310 Accessory Channel

- For use on class 1-3 trucks
- Base configuration includes 2" and 2<sup>5</sup>/<sub>16</sub>" dual ball
- Reversible pintle retainer for pintle capture on either ball
- Tool-free height adjustment
- Industry standard undercoat/powder coat for durability and corrosion resistance
- SAE J684/J847 compliant
- **Replaces up to 6 hitch accessories**



### TS 210AC

- 10,000 lbs. GTW
- 1,000 lbs. tongue weight
- Adjustable over a 10" range

TeleSwivel 210/310  
Base unit

### TS 310AC

- 14,000 lbs. GTW
- 1,400 lbs. tongue weight
- Adjustable over a 10" range



Shown here with attached dual-ball pintle capture combo



*The fastest, easiest, safest way to connect a trailer.  
EVER!*

[teleswivel.com](http://teleswivel.com)



## Our Company

- Creating high value, high quality, hitch solutions
- Innovative technology with 20+ patents
- Leading supplier to US Military for 10 years
- Improving the Total Cost of Trailering™ for fleets

---

## Transforming Towing

- Decrease injury causing accidents: cut operating costs
- Decrease lost time: increase productivity
- Decrease opportunity costs: increase revenues
- Decrease excessive idling: cut fuel and maintenance costs
- Decrease carbon emissions: enhance sustainability

---

## Contact Us

**Dave Woolf** - 919-949-2031 Email: [dwoolf@teleswivel.com](mailto:dwoolf@teleswivel.com)  
**Bob Lee** - 703-945-8431 Email: [blee@teleswivel.com](mailto:blee@teleswivel.com)

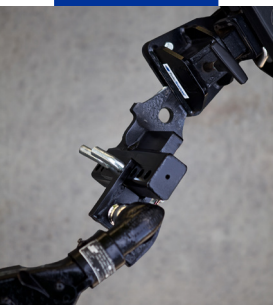
919-249-9249 888-TEL-SWIV 888-835-7948

## The TeleSwivel® Advantage



**1**

**Fast!**  
75% faster connection



**2**

**Easy!**  
25X larger target area



**3**

**Safe!**  
Move the hitch, not the trailer



**TOW!**

